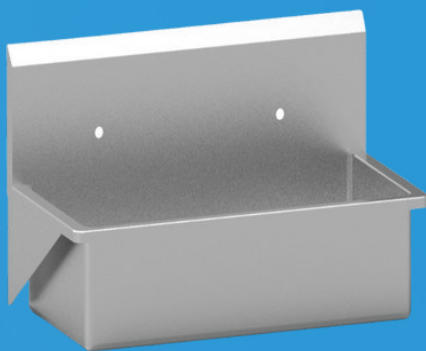


INFINIUM[®]

Stainless Catalog
Tables Sinks Cabinets



INFINIUM[®]

Stainless Series

100%



IMPROVING THE LEVEL OF CARE

Our stainless steel lineup offers unrivaled value with high grade materials, American manufacturing, a class leading warranty, and unmatched customer service.

Partner with us for worry free products that stand the test of time.

PERFORMANCE
USABILITY
DESIGN
RELIABILITY



1(866)918.8434
infiniummedical.com



STAINLESS TABLES & STANDS



Adj. Bullet Feet Options



Transport Gurney

Medium: 41"L x 24"D x 36"H
Large: 60"L x 24"D x 36"H



Drawer Option

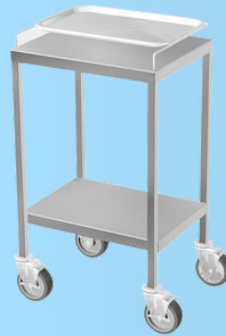
Medium: 46"L x 26"D x 36"H
Large: 60"L x 26"D x 36"H



Height Adjustable
40"W x 23"D
Marine Edge & Guard



Height Adjustable
40"W x 23"D



20"L x 16"D x 34"H
Optional Drawer
Optional Rail Tray



Height Adjustable
Mayo 30"W x 26"D
Marine Edge



Custom Sizes Available for All Tables & Stands

Heavy-Duty 16 Gauge Stainless Steel



Medium: 41"L x 30"D x 36"H
Large: 60"L x 30"D x 36"H

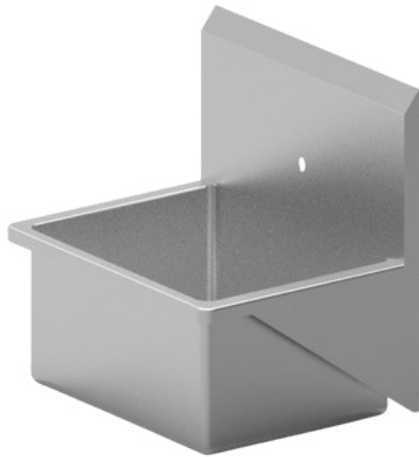


48"L x 30"D x 36"H

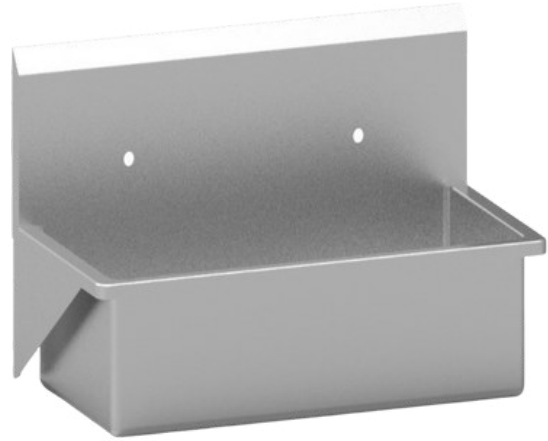
STAINLESS SINKS

Infinium offers professional grade surgical scrub sinks designed to meet the most demanding medical & surgical environments. All of our sinks are fabricated with 16-gauge heavy-duty 304 stainless steel and smooth well finished edges and welds. These products are very easy to clean and will last a lifetime.

Premium Surgical Scrub Sinks



PROFESSIONAL
BACKSPLASH



Single Surgical Scrub Sink with Rounded Corners & 12" Backsplash

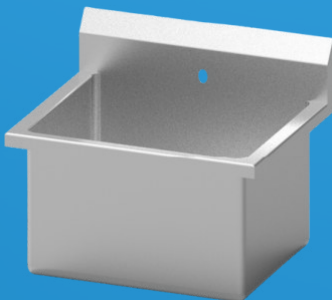
Bowl: 28"L x 18"D x 10.5"H
Wall Mount: 30"L x 21"D x 22.5"H

Double Surgical Scrub Sink with Rounded Corners & 12" Backsplash

Bowl: 46"L x 18"D x 10.5"H
Wall Mount: 48"L x 21"D x 22.5"H

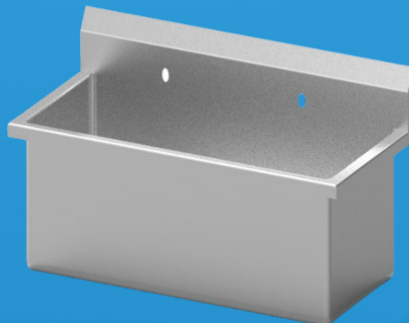
Our pro-series sinks provide excellent protection from water damage while also offering premium ergonomics and styling. These units are compatible with a wide range of wall mount faucets, sprayers, valves, and drain options.

Standard Surgical Scrub Sinks



Single Wide Surgery Scrub Sink

Bowl: 25"L x 20"D x 10.5"H
Wall Mount: 28"L x 23.5"D x 15.5"H
Counter Drop: 28"L x 26"D x 10.5"H **No Splash**



Double Wide Surgery Scrub Sink

Bowl: 45"L x 20"D x 10.5"H
Wall Mount: 48"L x 23.5"D x 15.5"H
Counter Drop: 48"L x 26"D x 10.5"H **No Splash**



Single Scrub Sink with Drain Board

Bowl: 28"L x 18"D x 10.5"H
8" Drain Board: 36"L x 23.5"D x 15.5"H
20" Drain Board: 48"L x 23.5"D x 15.5"H



1(866)918.8434
infiniummedical.com

STAINLESS SINKS



Stainless Kennel / Utility Table with Sink, Backsplash and Under shelf. 72" x 28" x 40"

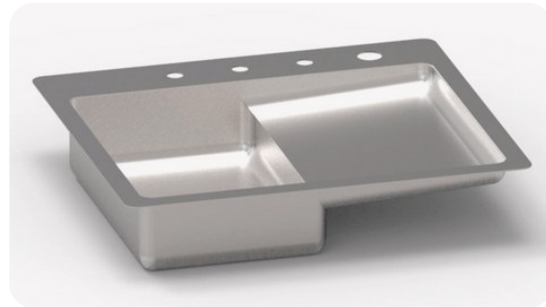
Work & Utility Sinks

Infinium offers professional grade work sinks designed to meet the most demanding medical and surgical environments. All of our sinks are fabricated with 16-gauge heavy-duty 304 stainless steel and smooth well finished edges and welds. These products are very easy to clean and will last a lifetime.

All sinks can come in left or right dominate configurations and are available with a variety of plumbing fixture options.



Stainless Utility/Rinse Sink with 24" Drainboard
46.25"L x 30"D x 43"H



Stainless Drop In Fecal Sink - 22.9" x 22.6" x 11.25"

Work & Scrub Sink Plumbing Fixtures



Gooseneck Swivel Spouts

Various size available with wall or sink mount options. Ask about hands-free model.



Specialty Sink Valves

Wall or floor mounted heavy-duty foot & knee valves



Hair Interceptor Drain Trap

Prevents clogging of P-Traps. Simple clog free clean out.



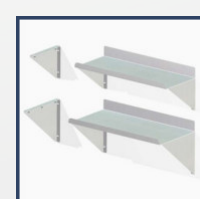
Sprayer Faucet Combinations

Industrial grade sprayer & faucet hardware comes in a variety of mounts & sizes.



Atmospheric Vacuum Breaker

Anti-siphon device designed to prevent contamination of fresh drinking water.



Wall Mount Shelving

One piece cantilever support design is available at std 24"L & custom up to 10' 6"L. Turn-up or down style.

STAINLESS CABINETS



Stainless Operating Room Cabinets

2 Glass Doors & 4 Adjustable Shelves

These stainless cabinets are constructed of 16 gauge type 304 stainless steel. Comes with 4 ea. multiple height adjustable shelves. Tempered glass doors with locking paddle lock handles.

Standard Unit Size: 47"W x 24"D x 72"H

Our operating cabinets are available with a free standing base or with optional heavy-duty locking casters. Custom sizes are available base on your specifications

All Stainless Built-In Cabinets

Custom Configurations & Sizes

Made from heavy-duty 16 gauge 304 stainless steel, our cabinets can be found in many of the country's leading practices, surgery centers, and hospitals.

Primary options include glass doors, adjustable shelving, lockable doors and drawers, custom sinks, and plumbing fixtures. We can work with your specifications to design a solution to fit your needs.



Stainless Exam Cabinet with Marine Edge Top

Medium: 44" x 22" x 36"
3 drawers / 1 door with left or right side configurations

Large: 58" x 22" x 36"
3 drawers / 1 door with left or right side configurations



Stainless Crash & Anesthesia Supply Carts

Crash Cart: 28"L x 18"D x 37"H
4 drawers / open bottom with cable management holes

Anesthesia Cart: (Shown)
28"L x 18"D x 37"H
3 drawers / 2 bottom doors



1.866.918.8434

infiniummedical.com

WARMING DEVICES

Blanket & Fluid Warmers

Complete Smart Warmer Product Line

- Choose from a size that fits your needs, most units offer either glass or stainless door options.
- Single, dual, and triple chamber options available with glass or stainless door options.
- Modern technology that controls and monitors temperature for excellent quality control.



Heat Therapy Pump
Hypo-hyperthermia
Equipment



Ask About Our Full
Package Operating
Room Solutions



Forced Air Patient
Warming & Blanket
Options



INFINIUM[®]

 1.866.918.8434

 infiniummedical.com.com

**Surgical & Stainless
Tables, Sinks, & Cabinets**